

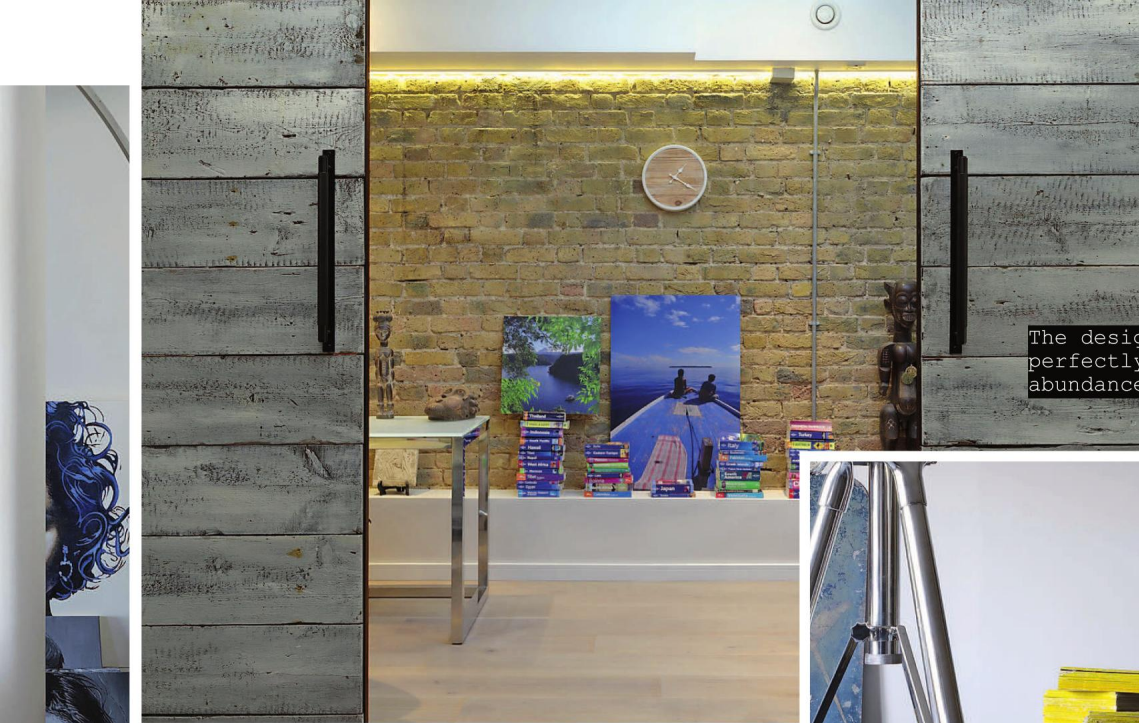


A WORK OF ART

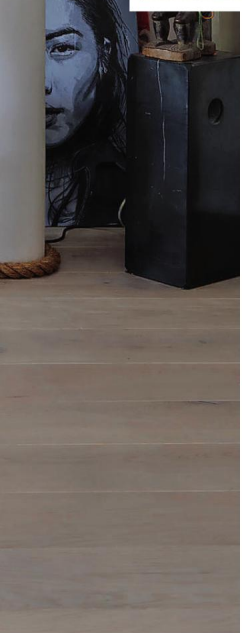
The Creative Director of Maisha Design writes about how this warehouse development on the river brightened up her life

Words ALMAS SHAMSEE



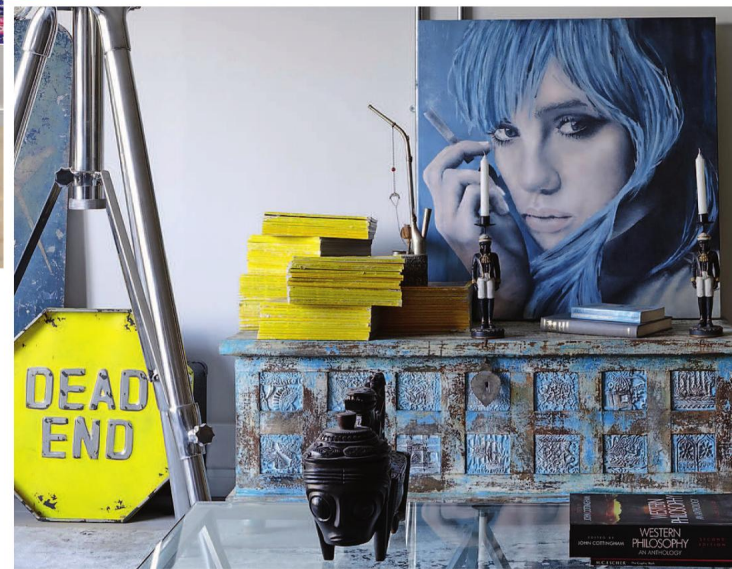


The design works perfectly with the abundance of stunning art



Being based in Shad Thames, we have worked in several warehouse developments and each has thrown up a different set of issues/challenges. Space is not usually a big issue because, by their very nature, warehouse spaces tend to be more open with less restriction such as structural walls. However, more challenging is the waste and drainage facilities, which restricts the position of the kitchens and bathrooms.

Our client's brief was to redesign and reconfigure a large fully open plan studio apartment to create a more functional space with areas that could be partitioned off for privacy without compromising on the open plan feeling of the space. In



Our job was to come up with a design that complemented the artwork

addition, he asked that we maintain an element of the industrial warehouse feel in keeping with the unique character of the building. We also had to provide a neutral enough backdrop to house the client's eclectic collection of artwork and accessories. The artwork gave us a very clear insight into his very unique style. So our job was to come up with a design and a backdrop that complemented his collection by providing an interesting, but neutral backdrop.

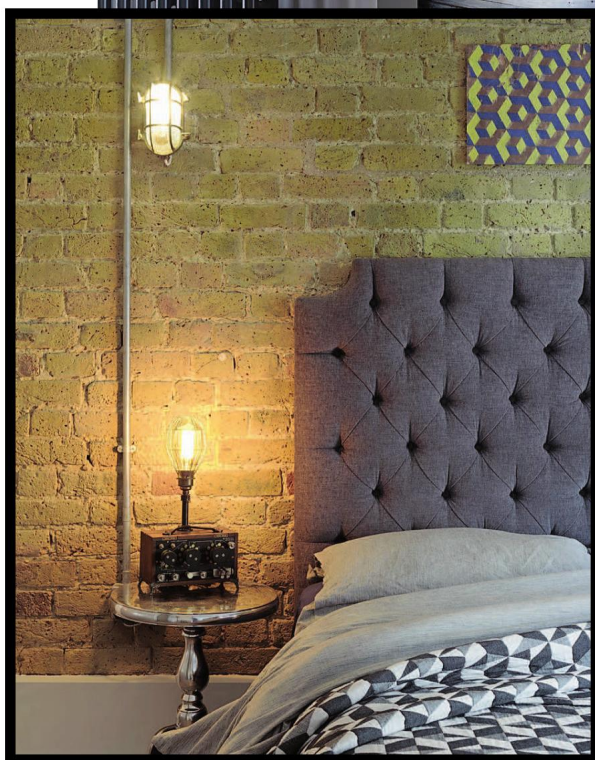
If I had to choose my personal favourite piece of art, it is the portrait in blue tones in the living room section. It provides a perfect focal point in the space. Rather than have it on the wall, it is propped up on a beautiful wooden chest and surrounded by other fascinating artefacts.

It was critical that the colour palette on the walls was neutral enough not to fight with the vivid colours of the artwork. The only strong colour we used was on the middle wall that separates the living space from the bedroom area, where we used a deep marine blue on the





Maisha Design's approach ensured the industrial feel of the warehouse space remained intact



bottom half of the wall. This was to help define separation of the space and provide a backdrop to the large wooden sliding doors that separate the space.

Our starting point was a large open plan studio apartment and, while we wanted to zone areas, we didn't want to lose the overall feeling of openness. The open plan living space with the kitchen with a large island in the middle is intended to be both functional and very social.

When the large sliding doors are pulled back the bedroom is fully visible from the living room, so the design needed to be clean and uncluttered. We

continued with a neutral colour palette, but selected a slightly quirky design for the headboard. We used hidden LED light to bring warmth to the brick wall. All the accessories were

the client's own collected from his travels around the world. We helped provide the backdrop and arrange them. The bath is the one piece we kept from the flat before refurbishment. We had it repaired and fitted modern taps.

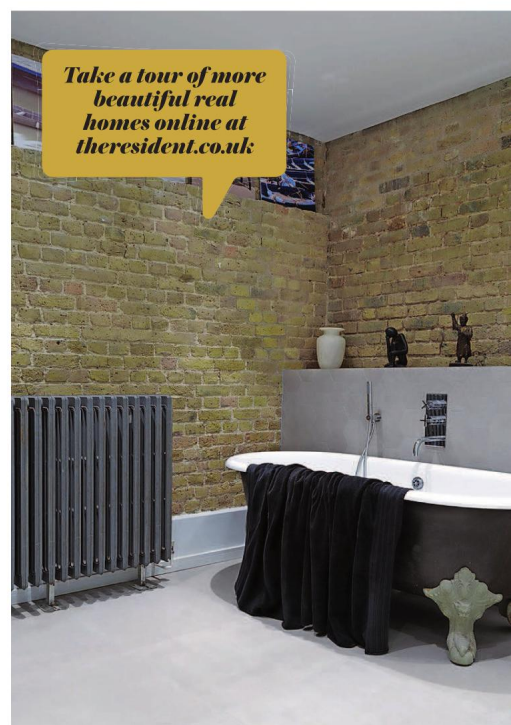
Find out more at maishadesign.com



The success of the design lies in the fact that it is a true reflection of the client's personality

continued with a neutral colour palette, but selected a slightly quirky design for the headboard. We used hidden LED light to bring warmth to the brick wall.

All the accessories were



Take a tour of more beautiful real homes online at theresident.co.uk